



## NEWS RELEASE

Metra Media Relations 312-322-6776

**FOR IMMEDIATE RELEASE**

# Metra to temporarily close Kilbourn Avenue rail crossing for replacement project

CHICAGO (April 22, 2025) – Metra will close the crossing at Kilbourn Avenue on its SouthWest Service Line in Oak Lawn for ten days for a full replacement beginning Wednesday morning, May 14. The crossing will be closed to all traffic and reopen on Friday, May 23.

Signage informing motorists of the closure and the recommended detour route will be posted in advance. The nearest and recommended route to cross the tracks will be Cicero Avenue, which can be accessed via Southwest Highway on the north side of the tracks and 95<sup>th</sup> Street on the south side.

Crossing replacement projects are part of the regularly scheduled maintenance of a railroad's assets and ensure the continued safety of railroad operations. The projects generally include the removal and replacement of rails, ties, and ballast, as well as the installation of new signal cable. When the project is finished, motorists will also notice a smoother ride due to new concrete panels between the rails and new asphalt approaches.

Metra and its partner railroads plan to replace 43 crossings at locations across Chicagoland in 2025.

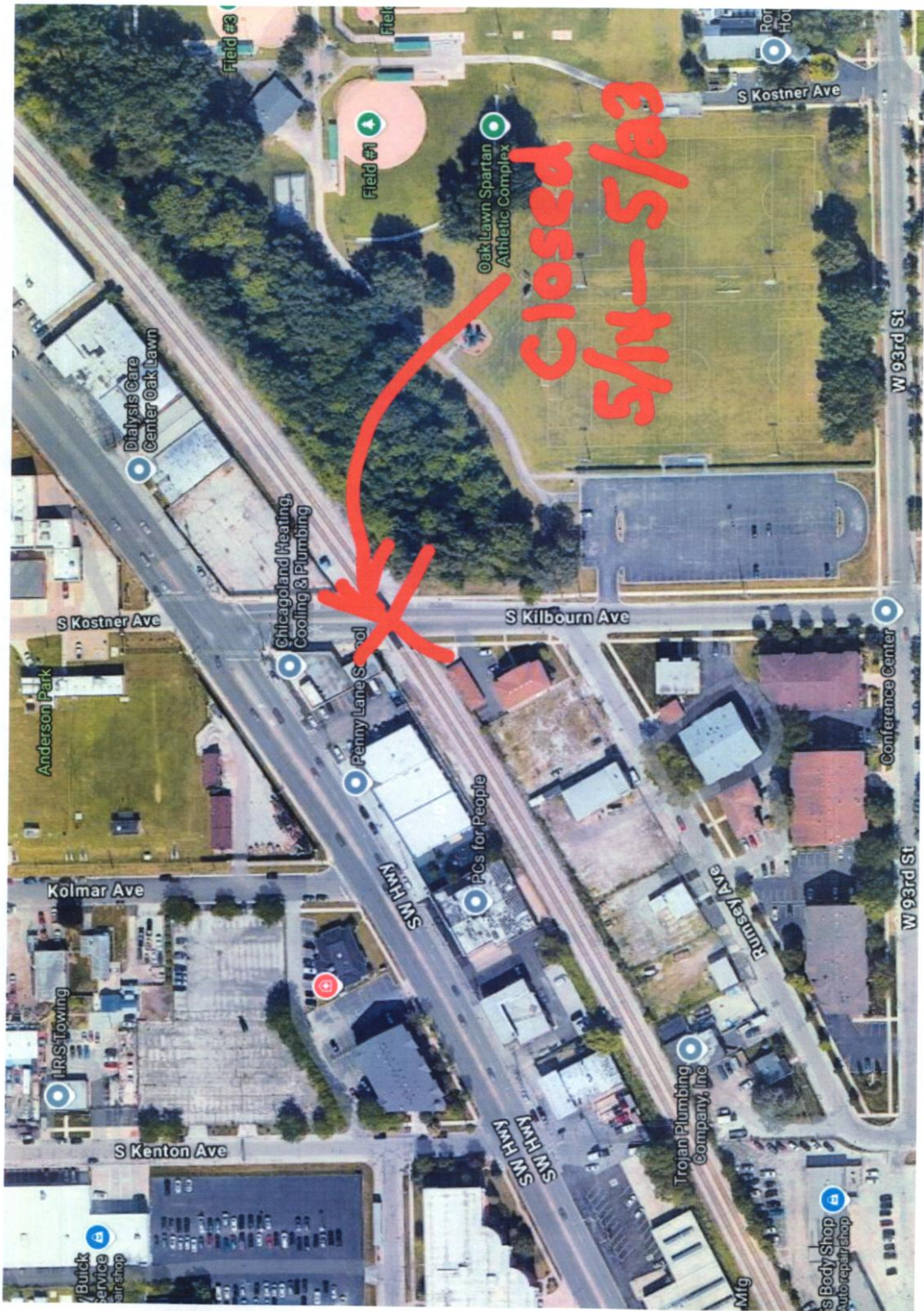
###

### **About Metra**

*Metra is an essential resource that safely and reliably connects individuals to the things that matter most in their lives — their work, their homes and their families.*

Connect with Metra: [Facebook](#) | [Twitter](#) | [YouTube](#) | [Instagram](#) | [LinkedIn](#) | [metra.com](#)





Closed  
S/M - 5/23